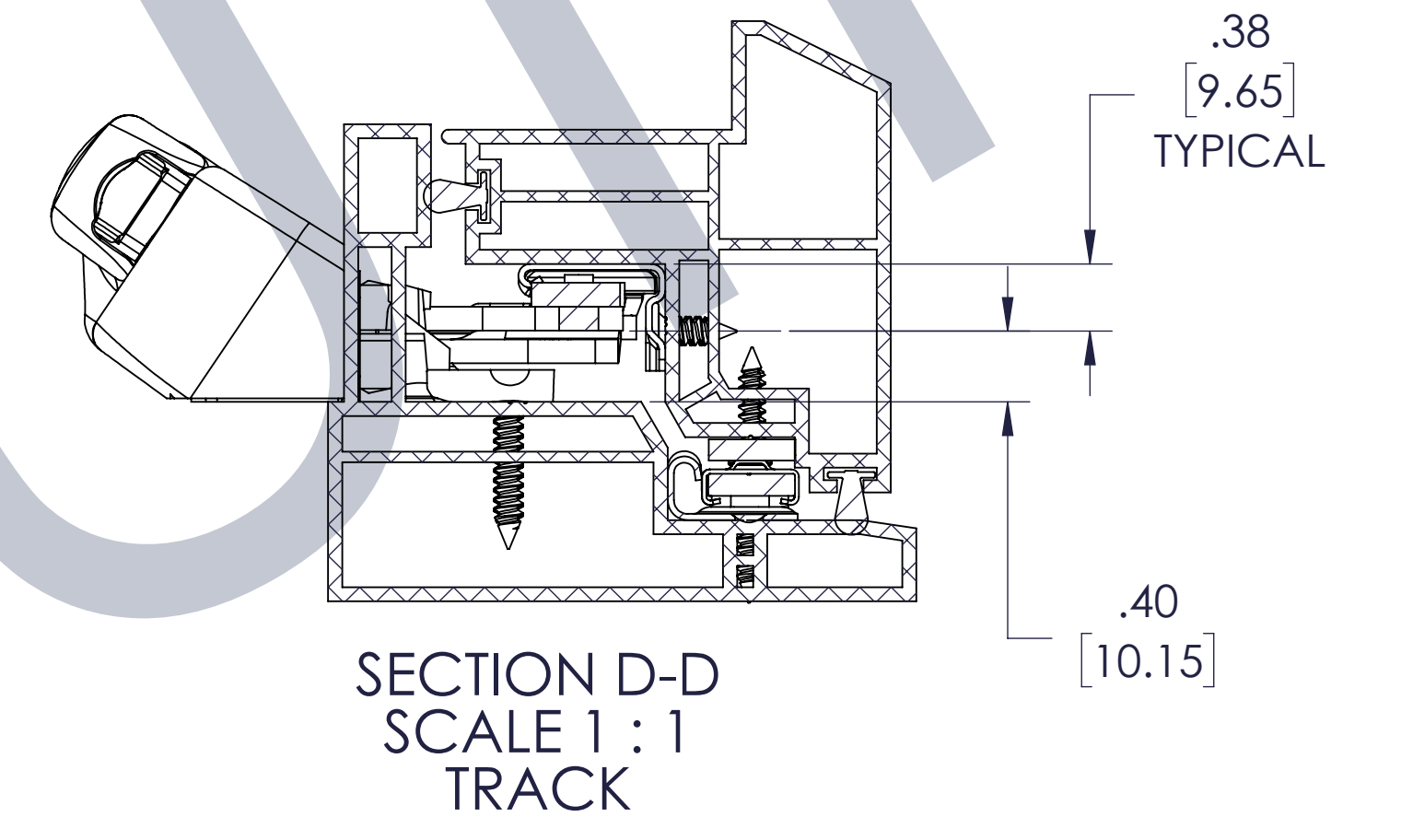
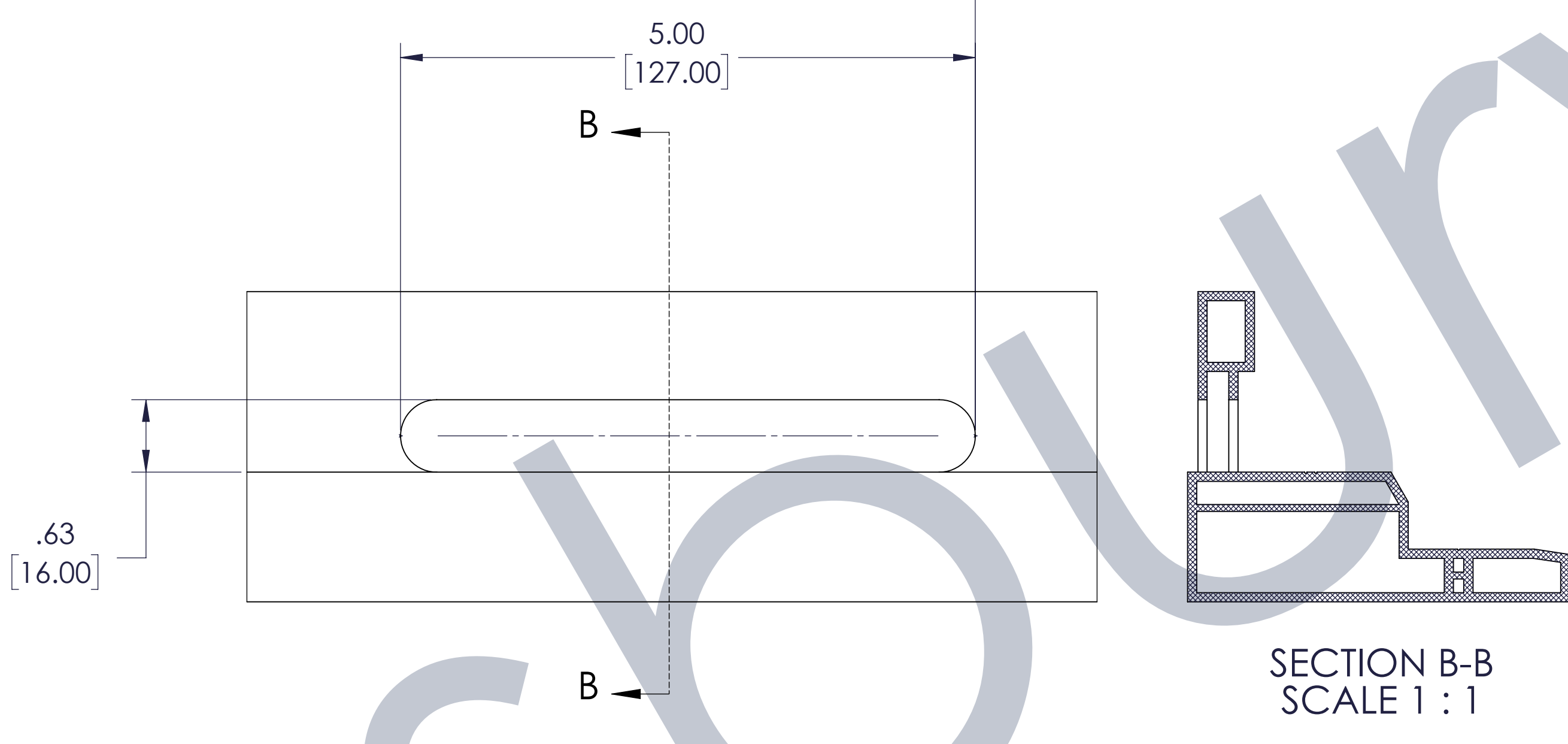
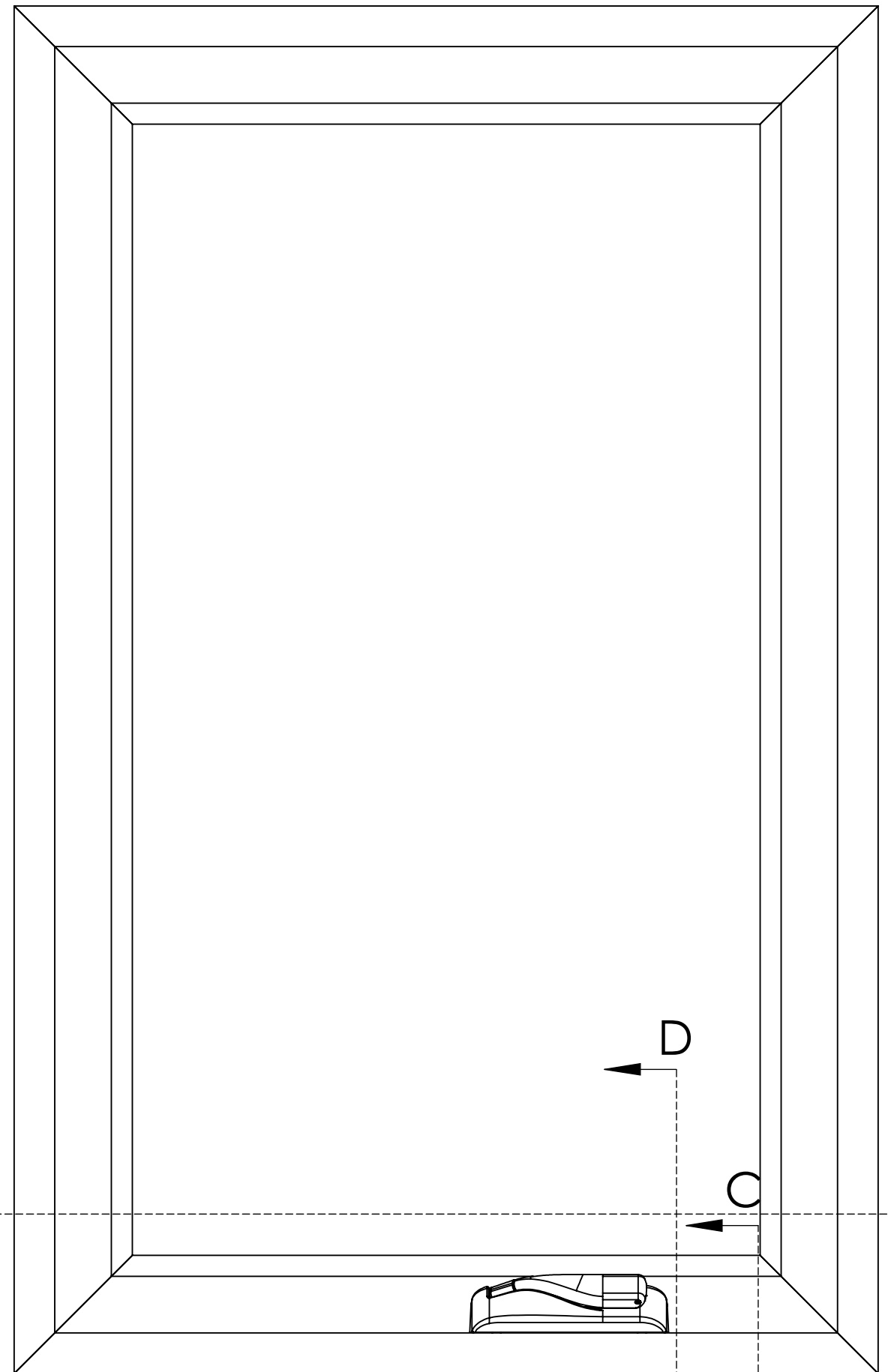


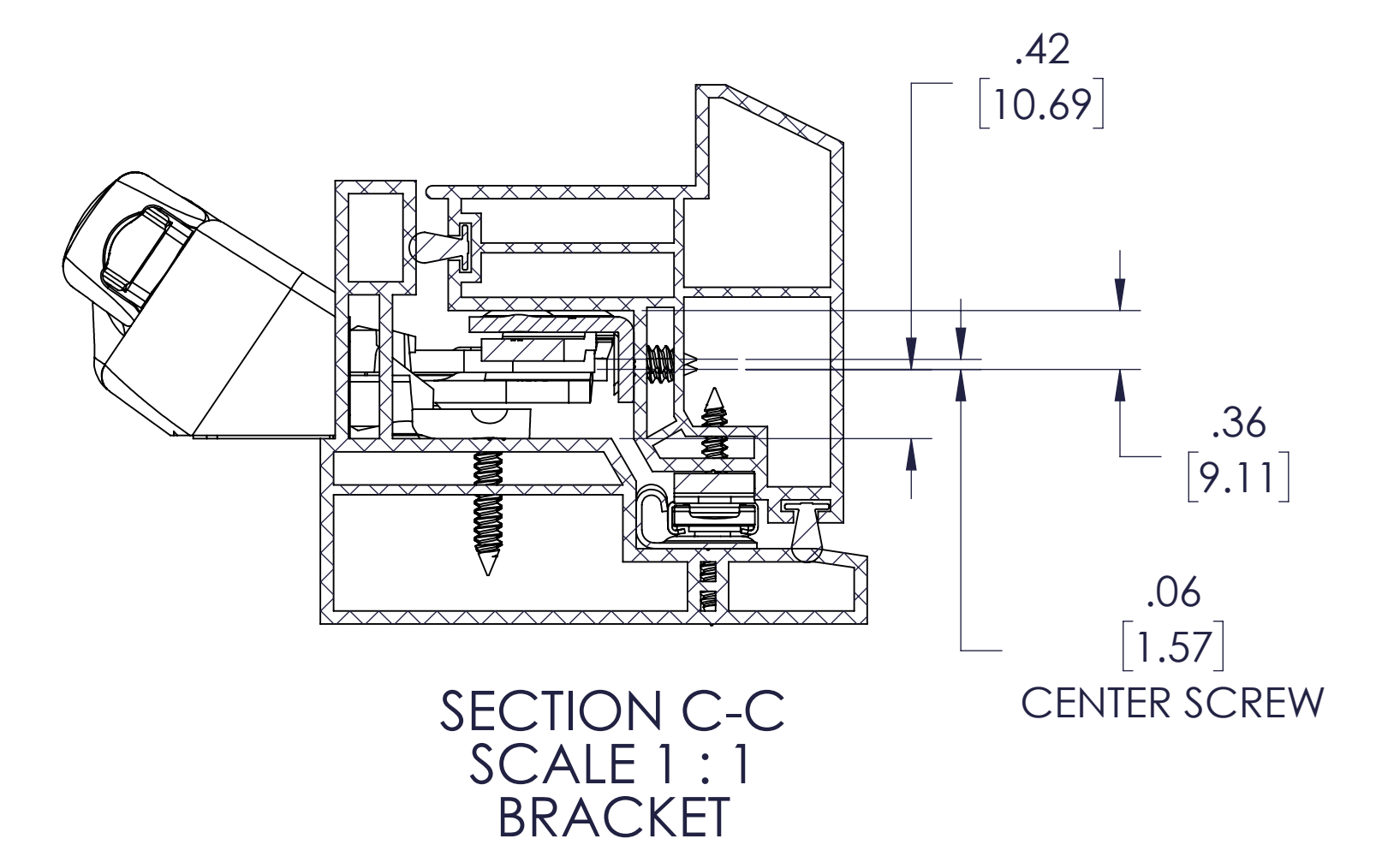
SECTION A-A  
SCALE 1:1



SECTION D-D  
SCALE 1:1  
TRACK



SECTION B-B  
SCALE 1:1

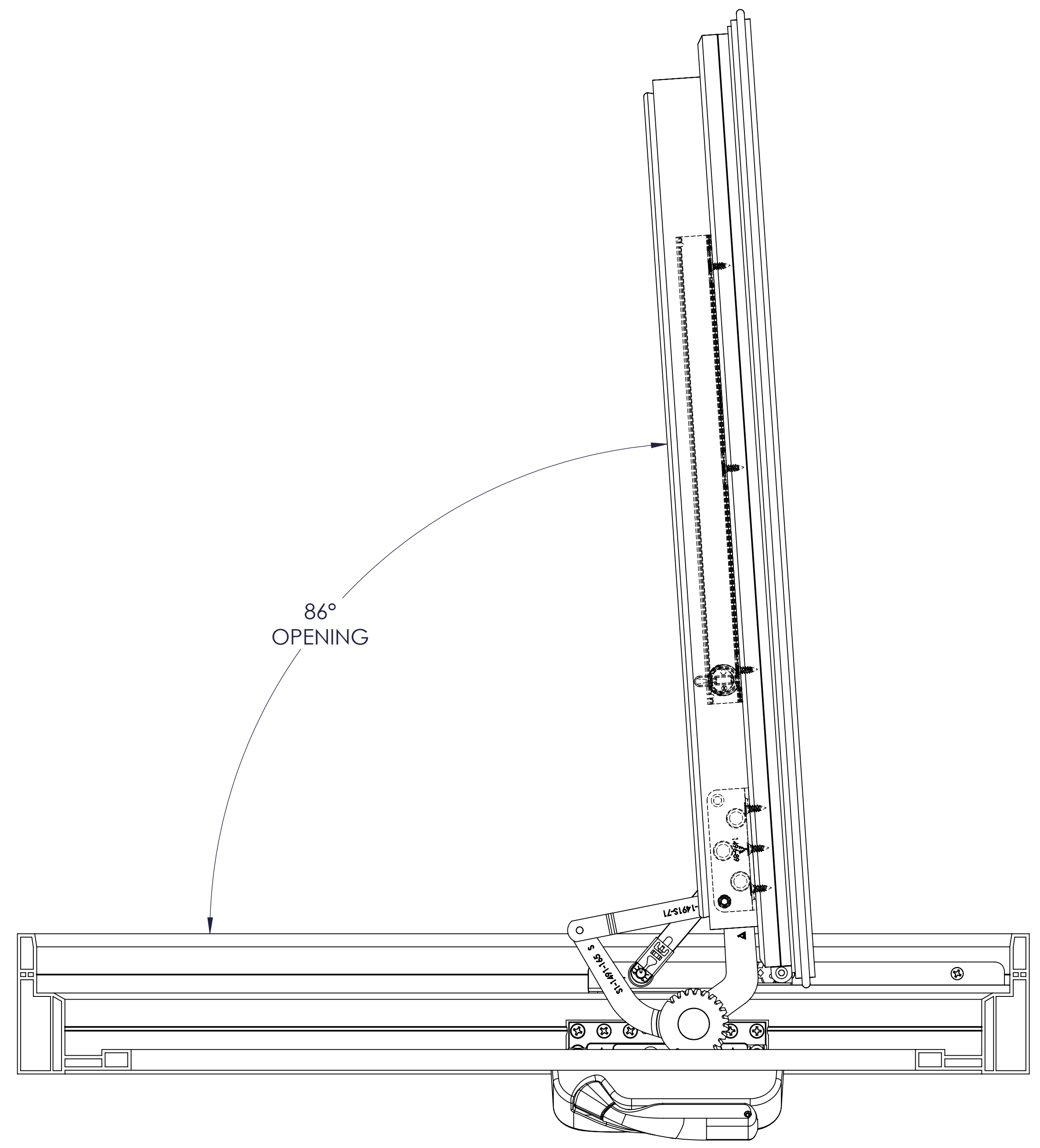


SECTION C-C  
SCALE 1:1  
BRACKET

ITEM NO.	PART NO.	DESCRIPTION	QTY.
1	200949	OPTIMA SHORT DUAL ARM LEFT (W1491S-100)	1
2	1920XX	EXPRESSIONS HDL & CVR LH (W1496-700)	1
3	2005730	Track/Slider ASM 11.1" (W1491S-79B)	1
4	1920105	SASH BRACKET LH W/BUMPS (W1496-189)	1
5	2003550	14" WASH HINGE ARM ASSY, LH (WWHA200-14LD)	1
6	2004271	14" TRACK ASSY, LH ADJ. (WCHT001-14LA)	1
7	2003551	14" WASH HINGE ARM ASSY, RH (WWHA200-14RD)	1
8	200472	14" TRACK ASSY, RH ADJ. (WCHT001-14RA)	1
9	19070	SCREW 7X1/2 PH FU SMS SS18-B	6
10	19068	SCREW 7X5/8 PH FH SMS SS410	8
11	19250	SCREW 8X1 PH FH SMS 18-B	6
12	14102	SCREW 8X.50 PH FH SMS SS18-B	6

NOTES:

- HOLD THESE DIMENSIONS AS CLOSE TO THEIR MINIMUMS AS MANUFACTURING TOLERANCES ALLOW.
- MOUNTING SCREWS FOR ALL HARDWARE SHOULD PASS THRU TWO WALLS OF PVC OR A SINGLE WALL WITH AN INTERIOR METAL INSERT.
- SNUBBERS RECOMMENDED ON WINDOWS OVER 30" TALL. SEE SNUBBER APPLICATION.
- ALL DIMENSIONS SHOWN ARE AFTER WELD.



86°  
OPENING